



# Richard Kearns

Irland, Ballybofey

## Siciliano Bach, Johann Sebastian

### About the artist

Due to loss of use of hands I will be unable to transpose, arrange or otherwise modify my music in here. Further compositions will be very very slow in appearing here.....Thanks for all the support.

Teachers and students may use my music and arrangements to study and practice without further adieu.....All public performances must seek permission first.

THANKS FOR THE DONATIONS.

They keep me going.

**Artist page :** <https://www.free-scores.com/Download-PDF-Sheet-Music-guiriel.htm>

### About the piece



**Title:** Siciliano  
**Composer:** Bach, Johann Sebastian  
**Arranger:** Kearns, Richard  
**Copyright:** Richard Kearns © All rights reserved  
**Publisher:** Kearns, Richard  
**Instrumentation:** 2 flutes (duet)  
**Style:** Baroque  
**Comment:** Concert Flute Alto Flute

### Richard Kearns on [free-scores.com](https://www.free-scores.com)



This work is not Public Domain. You must contact the artist for any use outside the private area.



- listen to the audio
- share your interpretation
- comment
- contact the artist

# Siciliano

J.S Bach  
Arrangement Richie Kearns 1996 ©

1

1: flute

2: Alto Flute

4

1: flute

2: Alto Flute

6

1: flute

2: Alto Flute

8

1: flute

2: Alto Flute

10

1: flute

2: Alto Flute

12

1: flute

2: Alto Flute

14

1: flute

2: Alto Flute

16

1: flute

2: Alto Flute

18

1: flute

2: Alto Flute

Measures 18 and 19 of a musical score. Measure 18 features a flute melody with eighth and sixteenth notes, and an alto flute accompaniment with eighth notes. Measure 19 continues the flute melody with a final quarter note and a half note, while the alto flute accompaniment concludes with a quarter note and a half note.

20

1: flute

2: Alto Flute

Measures 20 and 21. Measure 20 shows a more active flute melody with eighth and sixteenth notes, accompanied by eighth notes in the alto flute. Measure 21 features a flute melody with a quarter note and a half note, and an alto flute accompaniment with a quarter note and a half note.

22

1: flute

2: Alto Flute

Measures 22 and 23. Measure 22 has a flute melody with a quarter note and a half note, and an alto flute accompaniment with a quarter note and a half note. Measure 23 continues the flute melody with a quarter note and a half note, and the alto flute accompaniment with a quarter note and a half note.

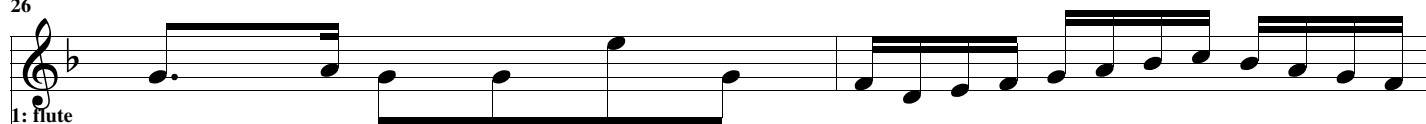
24

1: flute

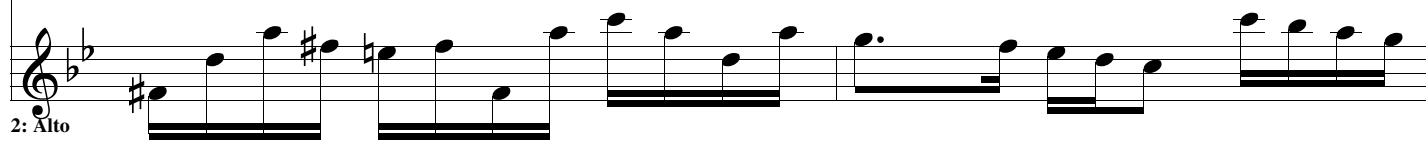
2: Alto Flute

Measures 24 and 25. Measure 24 features a flute melody with a quarter note and a half note, and an alto flute accompaniment with a quarter note and a half note. Measure 25 continues the flute melody with a quarter note and a half note, and the alto flute accompaniment with a quarter note and a half note.

26



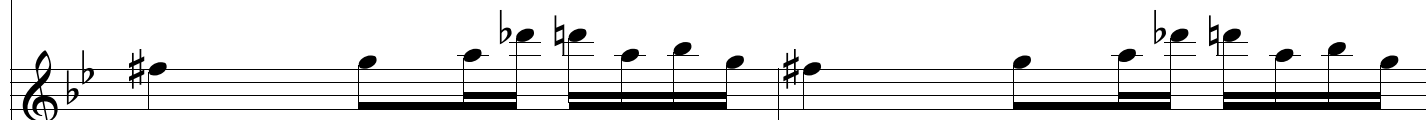
1: flute

2: Alto  
Flute

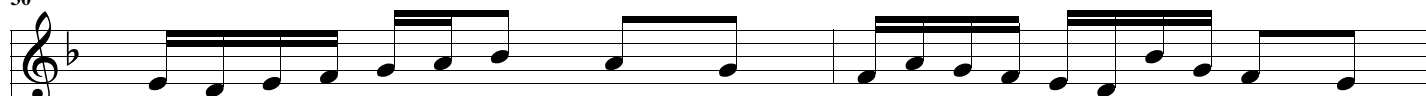
28



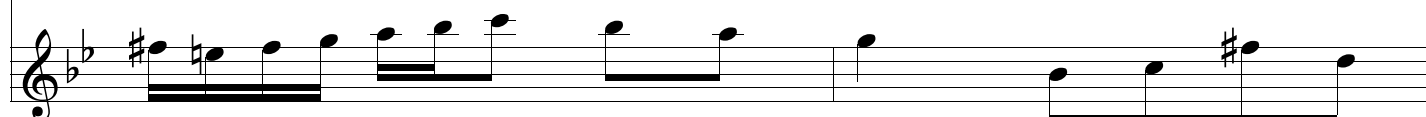
1: flute

2: Alto  
Flute

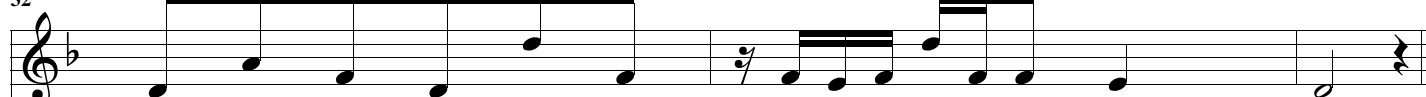
30



1: flute

2: Alto  
Flute

32



1: flute

2: Alto  
Flute